

KWS SISKIN

Winter Wheat

KWS Sterling x CPBT W134




SEEDING
THE FUTURE
SINCE 1856



#supersiskin

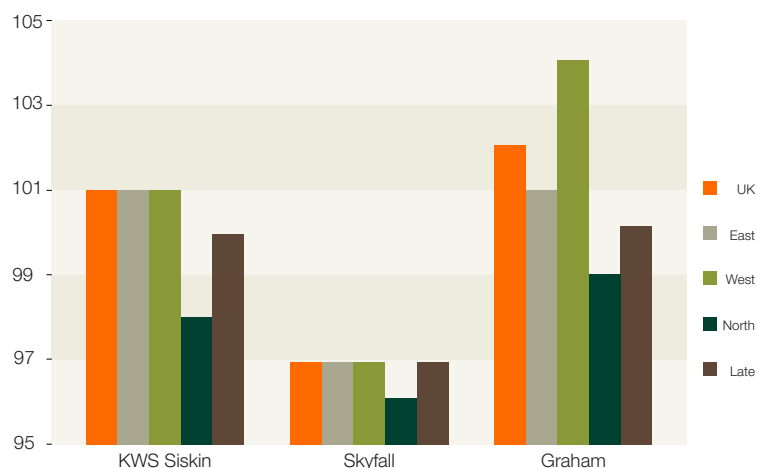
DYNAMIC
WHEATS

- Excellent *septoria tritici* at 6.6
- Superb physical grain quality
- Vigorous growth habit with wide sowing window

KWS Siskin is so versatile, it can grow anywhere across the farm. Combining high yields, exceptional hagberg, strong protein (12.6% from milling trials) and its positive  status - KWS Siskin opens multiple end markets for farmers, unlocking premiums for their shed load of grain.

In addition it is consistent across soil types and performs well as both a first and second wheat. KWS Siskin has one of the best *Septoria tritici* scores of 6.6 on the List and scores high for mildew and yellow rust, thus highlighting the disease profile farmers can expect from KWS Dynamic Wheats.

UK Yield (% Controls)



	KWS Siskin	Skyfall	Graham
Yield (% treated controls)			
UK	101	97	102
East	101	97	101
West	101	97	104
North	98	96	99
Disease			
Mildew	8	6	7
Yellow Rust	9	5	8
Brown Rust	5	8	6
<i>S. tritici</i>	6.6	5.8	6.8
Eyespot*	5	6@	4
Fusarium	5	7	6
OWBM	-	R	-
Agronomy			
Lodging (+ PGR)	7	8	8
Lodging (- PGR)	6	8	7
Height (cm)	83	83	87
Ripening (days +/- Skyfall)	0	0	0
Sp.Wt (kg/hl)	77.2	78.3	76.8
Hagberg	286	278	276

Data sources: AHDB Recommended List, Winter Wheat 2020/21
*@ believed to carry Pch1 Rendezvous resistance gene to Eyespot

KWS UK Ltd, 56 Church Street, Thriplow, Royston, Herts, SG8 7RE

■ Tel: 01763 207300 ■ Fax: 01763 207310 ■ Email: info@kws.com ■ www.kws-uk.com