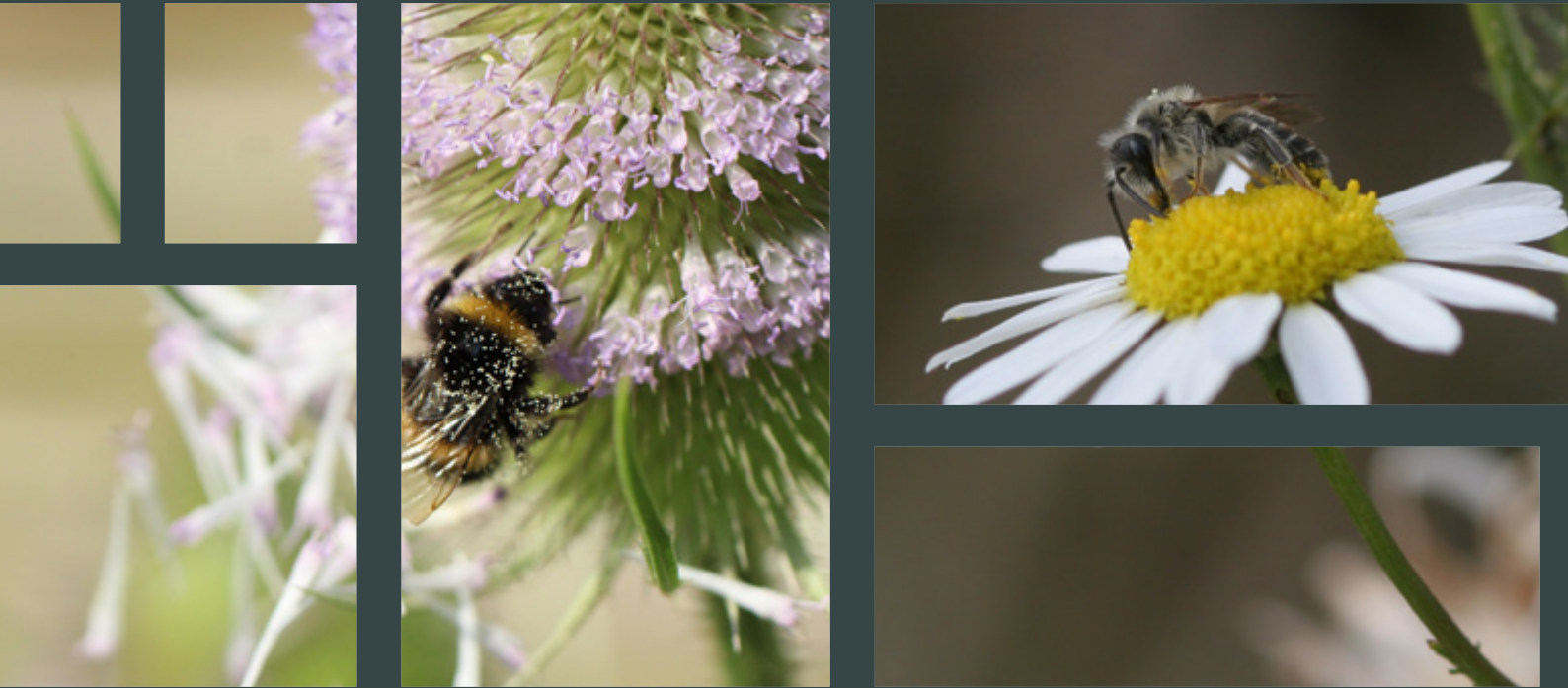


Published 2025

Agri intelligence



Agrii Environmental Services



www.agrii.co.uk

AgriiTM



Contents

Our Advisors	4
Transitioning to Sustainable Farming	6
England	6
Scotland	6
Wales	6
Carbon Services	7
Biodiversity Services	8
Soil Health Services	10
Regenerative Agriculture Programmes	12
Environmental Toolkit – Planning and Records	13

Introduction

Welcome to Agrii's guide to environmental services – an overview of the opportunities available to you and the support we offer.

Embracing Change and New Opportunities

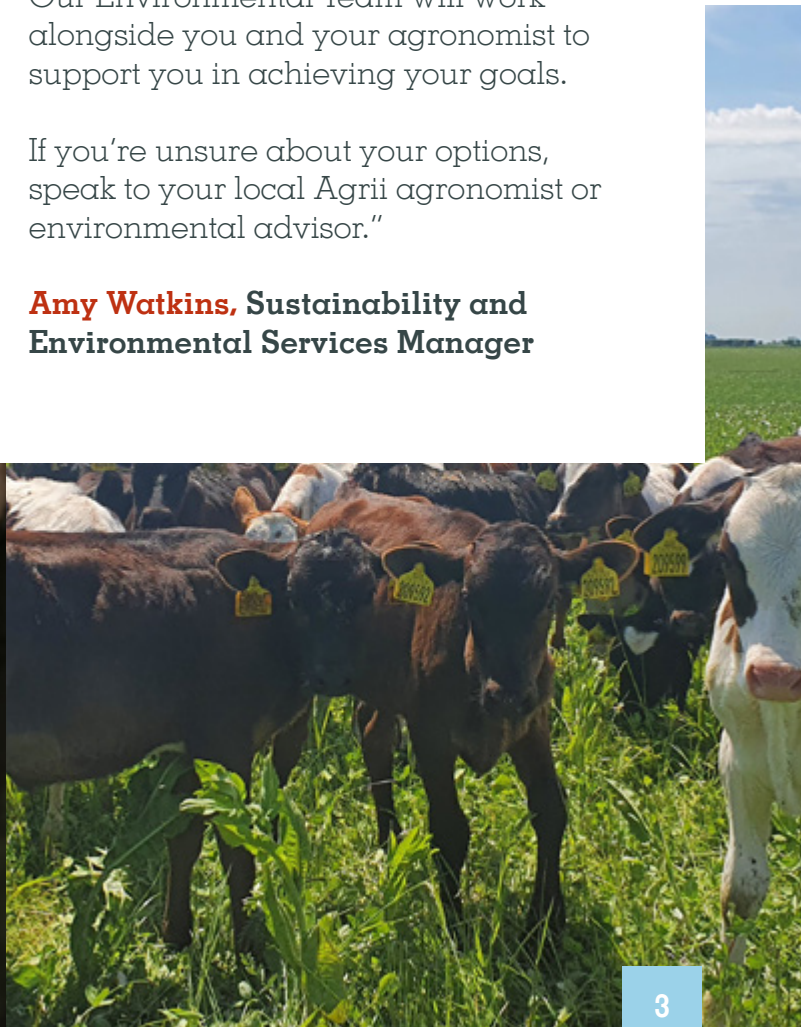
"Change is inevitable in agriculture, and we're experiencing it in various forms. Perhaps the biggest shift is the transition from BPS to new sustainable farming schemes across the UK. With the UK's exit from the EU, we can expect more frequent changes to grants available, scheme rules and funding, so adaptability is crucial. Your agronomist is your main point of contact, and we want to ensure we're equipped as a business to help you prepare for new opportunities.

Our team of environmental advisors have a deep understanding of the requirements of these new schemes and offer support from applications to

maximising environmental delivery, all in line with your business goals. We continue to explore new opportunities and collaborate with other businesses to offer the latest advice and technologies, aiming to maximise productivity whilst minimising risk to nature and the surrounding environment. We encourage you to embrace these changes and explore the options that work best for you. Our Environmental Team will work alongside you and your agronomist to support you in achieving your goals.

If you're unsure about your options, speak to your local Agrii agronomist or environmental advisor."

Amy Watkins, Sustainability and Environmental Services Manager



Our Advisors

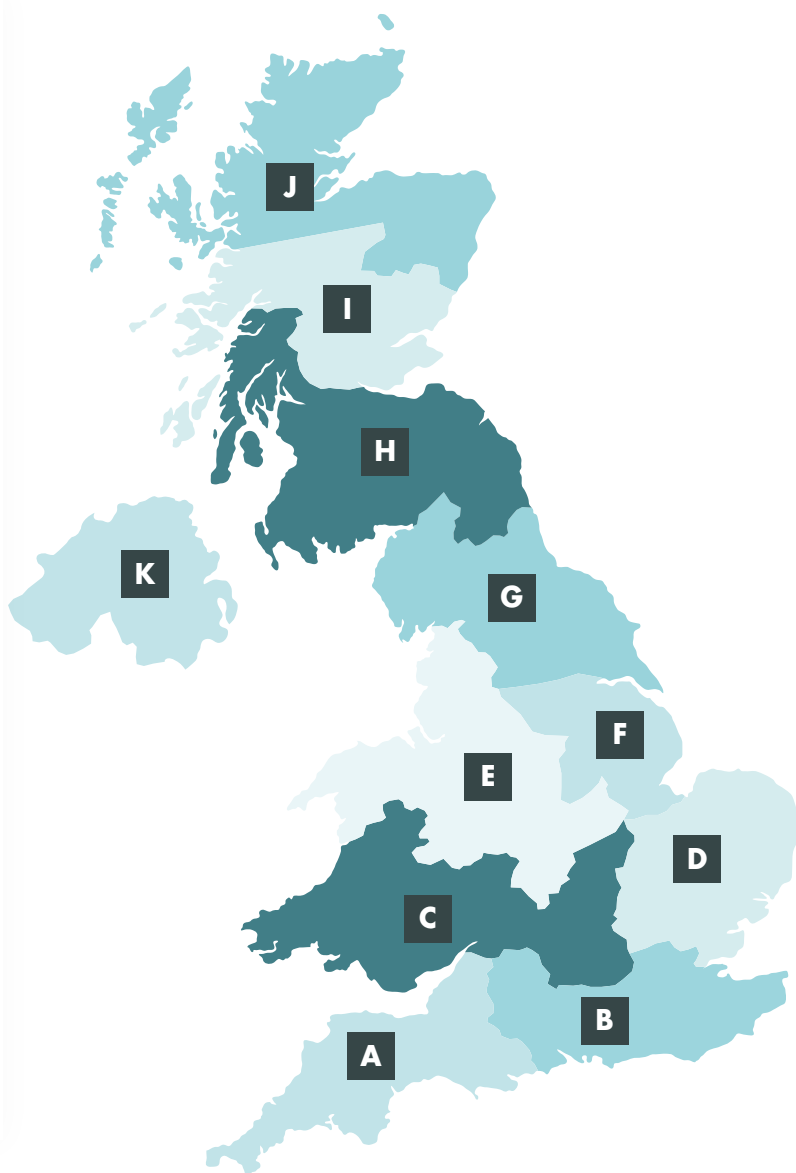
We see a wide range of people getting involved with these schemes, but if you are unsure on your options, speak to your local Agrii agronomist or environmental advisor.

Our team offer advice on designing schemes, soil health, precision agriculture, water resource management, biodiversity conservation, and climate change adaptation.

A	John Harper	07880 030837
B	Del Jenkins	07976 705552
C	Paul Pickford	07909 925413
D	Vicki Brooks	07920 823145
D	Jo Bell	07889 043451
D	Louisa Kenney	07866 142440
E	Ben Griffiths	07966 533492
E	Jane Clement	07855 201150
F	Alex Olivant	07923 451958
G	Laura Wraith	07760 776089
H	Jenni Douglas	01361 310286
I	Jenni Douglas	01361 310286
J	Jenni Douglas	01361 310286

NATIONAL CONTACTS:

Amy Watkins	07970 602087
Marek Nowakowski	07885 252383
Paul Pickford	07909 925413
Emma Smith (Fruit)	07880 383521





Where can we help



**Sustainable Farming
Incentive & Countryside
Stewardship (England)**



**Sustainable Farming
Schemes (Wales & Scotland)**



**Seed Mixture
Advice**



**Carbon Markets
& Audits**



**Habitat Creation
& Management**



**Capital and
Resilience Grants**



NVZ Compliance



Red Tractor Audits



**Natural England
Tenders**



**Management Plans
(Soil, Nutrients,
Hedgerows & IPM)**



**Environmental
Impact Assessment**



Transitioning to Sustainable Farming


As BPS payments continue to reduce until 2027, UK Governments are paying farmers to deliver public goods for public money such as reducing emissions, improving biodiversity and water quality, and enhancing soil health. England, Wales, and Scotland are introducing their own schemes:

England - Environmental Land Management Scheme (ELMS), which includes the Sustainable Farming Incentive (SFI) and Countryside Stewardship.

Wales - Sustainable Farming Scheme (SFS).

Scotland - Preparing for Sustainable Farming (PSF).

These schemes offer a great opportunity to compensate for the loss of BPS and future-proof your business. However, unlike before, certain actions are required to receive payments. With more requirements attached to payments, it is important to understand what you are committing to. Our advisors work with you to build a plan for the scheme, to ensure work requirements are delivered.



England

The Sustainable Farming Incentive (SFI) in England offers flexibility, but it's important to meet the requirements of the scheme. We provide advice on how to integrate these actions with current farming practices and identify the most cost-effective options.

There are also capital grants available to help access the infrastructure and equipment needed to fulfil these payments, such as the Farming & Equipment Technology Fund.

Scotland

As Scotland's transition to sustainable farming continues to evolve, we want to ensure our farming customers stay on track with the latest requirements. We work closely with FBRSeed to assist with grant applications to achieve the Preparing for Sustainable Farming (PSF) scheme.

Our team supports you with the Basic Payment Scheme, Greening, entitlement transfers, and other schemes such as the Less Favoured Area Support Scheme (LFASS), Scottish Suckler Beef Support Scheme (SSBSS), Agri-Environment Climate Scheme (AECS), and Nitrate Vulnerable Zones (NVZ).

Wales

As environmental schemes in Wales evolve, we want to ensure our customers stay up-to-date with the latest opportunities available. With the blanket designation of Wales into an NVZ, we can support you with NVZ compliance through nutrient management plans, N-max, and risk maps.

Carbon Services

New government schemes are designed to be stackable with other farm sustainability programmes. We continue to explore the pros and cons of different programmes and funding options, helping you make the best decision for your business.



There are two options available around carbon:

- 1** Undertaking a carbon audit for your business.
- 2** Join a carbon programme to generate verified credits to sell.

Carbon programmes

Landowners and managers are increasingly looking at carbon programmes as a new revenue stream, where they can be rewarded for improving soil health and reducing emissions. There are two well-known carbon programmes in the UK, and we work closely with Agreena.

Agreena's programme offers flexibility with no minimum requirements, and we can provide a free estimate for your business. After the initial estimation, we work with you to identify the most suitable way forward.

Carbon audits

Carbon audits are increasingly required for bank loans, grain contracts, and to benchmark your business. We offer support through various platforms:



Farm Carbon Toolkit – Ideal for mixed or arable farms to assess the carbon footprint of your entire business.



Cool Farm Tool – Suitable for crop-specific carbon audits in the supply chain.



AgreCalc – Recommended for farmers in Scotland, aligning with the Preparing for Sustainable Farming requirements.



Farming, biodiversity and renewable energy



Currently, there are various revenue opportunities associated with managing farmland for biodiversity or the generation of renewable energy. If you'd like to explore these, our experts are here to help.

Habitat Creation, Enhancement and Management

Future-proofing your farming business includes protecting the environment it operates in. Through a farm walk, we can help you identify potential improvements in areas such as hedgerow and wildflower management, opportunities for creating habitats, and encouraging beneficials. We know the right seed mixes for wildflowers and planting mixes for hedgerows and can help you to create and better manage habitats. In fact, through our sister companies Green-Tech and British Hardwood Trees, we can supply wildflower seeds, bare root trees and shrubs and all accessories such as tree planting stakes and tubes.

Biodiversity Net Gain (BNG)

In England, it is now mandatory for property developers to achieve a minimum 10% gain in biodiversity compared to pre-development conditions. This requirement presents a significant revenue opportunity for landowners with existing unmanaged habitats or underperforming areas. By carrying out the right kinds of biodiversity

enhancements, you can generate biodiversity credits to sell to developers. Our sister companies in Origin Environmental have teams of ecologists who undertake habitat baseline surveys, design biodiversity enhancements and management plans, and can advise on the potential benefits and revenues from BNG. These include:

Avian Ecology (Cheshire), Bowland Ecology (Cumbria), Brooks Ecological (Yorkshire), GE Consulting (Exeter and Bristol) and Keystone (Gloucestershire). All companies operate both regionally and nationally.

Through their specialist environmental contracting team, Keystone can also design and build habitat schemes.

Renewable Energy

As well as advising on biodiversity and BNG, through our sister company Neo Environmental, we can advise on how to obtain planning consents for renewable energy schemes such as onshore wind and solar farms. Neo are one of the market leaders in this field and have obtained consents for scores of schemes on farmland across the UK.

Connecting Farming with the Environment



Seed Mixtures

We offer a range of ready made seed mixtures to help you meet the requirements of environmental schemes while maximising benefits to biodiversity and soil health.

We also offer specialist tailored mixes to meet your specific needs.

Our mixtures include:

- + Seed mixtures for pollinators and other beneficial insects.
- + Crops for pollinators
- + Grass field margins
- + Wild bird seed mixtures
- + Brassica fodder crops
- + Soil-improving cover crops

Our Crop Input Specialists can discuss our suggested mixtures or help design a bespoke mixture to suit your requirements.



A full brochure of our mixtures is available to view here.



Soil Health Services



Changes to any existing system need to be viable and based on sound evidence, which is why we believe it's essential to help you understand your soil through regular testing.

Soil Testing

Whether for compliance or a better understanding of your soil, we offer a range of analysis packages. Our team will take soil samples, have them analysed, and provide you with the results to help plan your nutrient inputs and maximise crop productivity.

Regenerative Agriculture Programmes

With increasing demand from the supply chain to demonstrate responsible ingredient sourcing, we work collaboratively with Viterro, GB Seeds, and food brands to offer premium contracts to our customers. These contracts provide another source of revenue for improving sustainability and obtaining recognition for your environmental efforts. Different programmes are available depending on your farm's location and crops, so please speak to your local agronomist to find the most suitable option.

A Deep Knowledge of Your Soils

Soil Resilience Strategy

Beyond soil testing, it's crucial to understand soil structure, water pathways, and biological activity. Our Soil Resilience Strategy (SRS) helps you identify underlying issues, explore potential changes, and develop strategies to improve soil health and fertility. This is ideal for those looking to change their establishment systems or assess the impact of their activities.

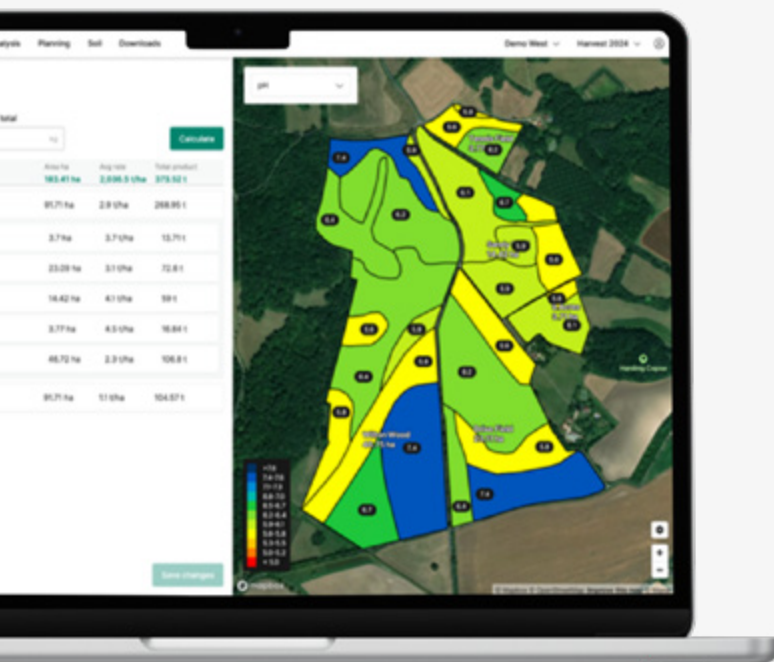


Environmental Toolkit – Planning and Records

Our partnerships and collaborations continue to ensure that we provide the best options for planning and delivering environmental outcomes.

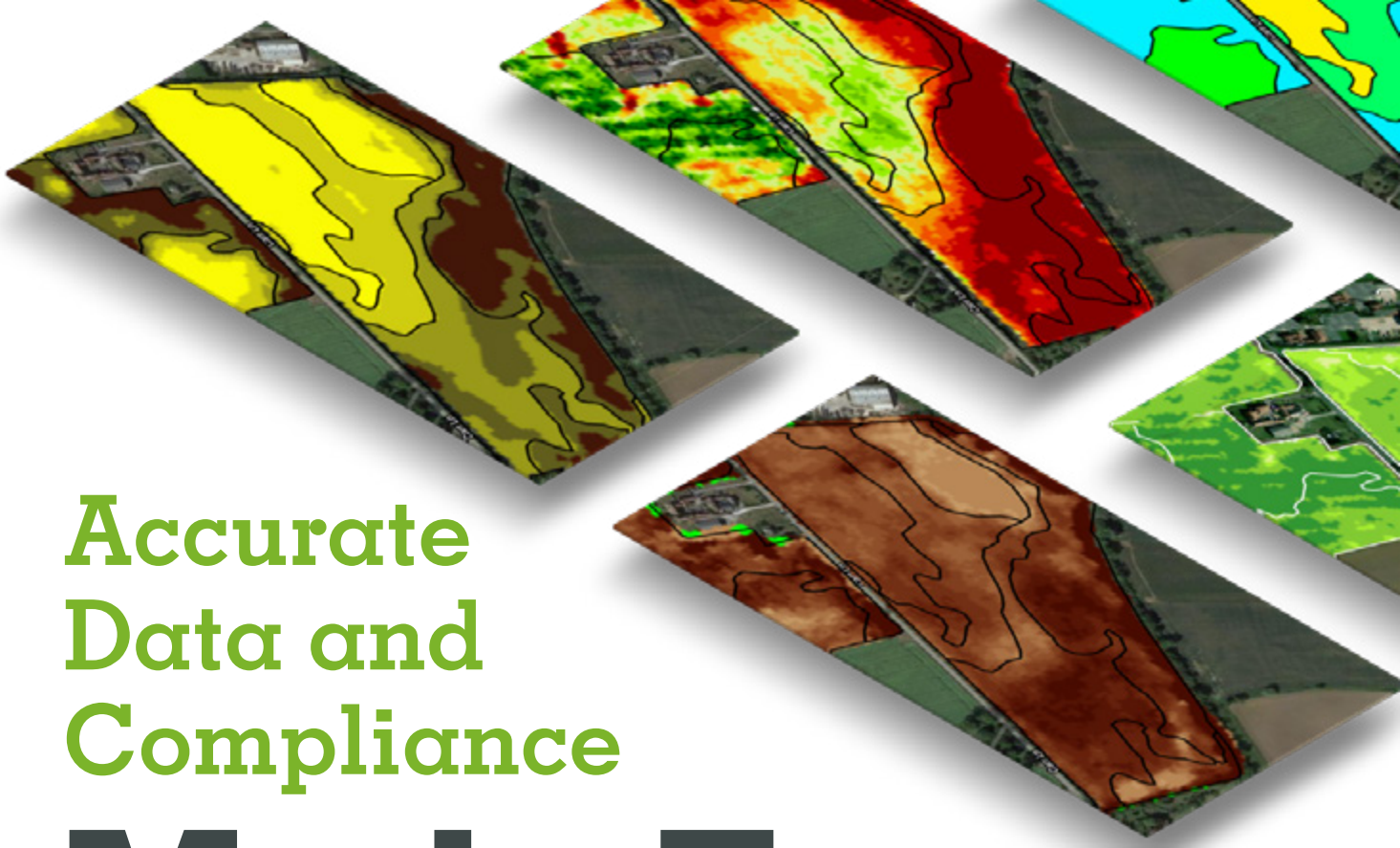
Planning

Deciding which land to dedicate to habitat creation is never easy. We use tools such as the UKCEH E-Planner, which is based on strong scientific evidence, to narrow down the most suitable options for woodland creation, pollinator or bird habitats, and buffer strips for water protection. Coupled with our initial site visit, this ensures that any decision provides the maximum environmental output.



Of course, this needs to be considered alongside food production, which is where our RHIZA soil and yield maps help assess the economic impact of taking land out of production. Our advisors use these tools alongside their expertise to maximise the benefit to your farm business.

Volatile markets and unpredictable weather have made improving efficiency more important than ever. In England, funding is available to help improve efficiency through nutrient and soil management planning, and developing an Integrated Pest Management plan.



Accurate Data and Compliance

Made Easy

Our Contour platform provides the framework to build these plans, ensuring you remain compliant with environmental schemes and maximise your efficiency.

Logging Records

To demonstrate that you've met the requirements of environmental schemes, photographic evidence is often required. Through our Contour platform, you can upload photos and PDF documents (such as a seed order) and geotag them to a specific field.

This way, you're always prepared for any inspection. This function is available through our free base package.

Price Guide

We understand that having a guide on costs is important for planning ahead in the changing agricultural landscape. Therefore, we provide quotes on an individual basis to make environmental services work for your farm.

To get a quote for any of the services discussed in this brochure, please contact one of our advisors.



Your Advisors

We see a wide range of people getting involved with these schemes, but if you are unsure on your options, speak to your local Agrii agronomist or environmental advisor.

Our team offer advice on designing schemes, soil health, precision agriculture, water resource management, biodiversity conservation, and climate change adaptation.

A	John Harper	07880 030837
B	Del Jenkins	07976 705552
C	Paul Pickford	07909 925413
D	Vicki Brooks	07920 823145
D	Jo Bell	07889 043451
D	Louisa Kenney	07866 142440
E	Ben Griffiths	07966 533492
E	Jane Clement	07855 201150
F	Alex Olivant	07923 451958
G	Laura Wraith	07760 776089
H	Jenni Douglas	01361 310286
I	Jenni Douglas	01361 310286
J	Jenni Douglas	01361 310286

NATIONAL CONTACTS:

Amy Watkins	07970 602087
Marek Nowakowski	07885 252383
Paul Pickford	07909 925413
Emma Smith (Fruit)	07880 383521

