

# TANKS CATALOGUE





# Welcome

Agrii delivers advice, services and technology to UK farmers and horticulturists. As part of our offer we supply a range of water, fertiliser, oil, rainwater harvest, and septic tanks/sewage treatment plants.

This catalogue outlines what we provide and how you can contact us; we hope you find it of use.

# Contents

UNDERGROUND & ABOVE GROUND  
WATER STORAGE

4-7

**RAINWATER HARVESTING FILTER KITS**

8-9

**WASTEWATER, SEWAGE TREATMENTS  
& PUMP STATIONS**

10-14

**BUNDED OIL TANKS**

15-16

**DIESEL TANKS & TRANSFUEL  
BUNDED FUEL TANK**

17-19

**HOW TO ORDER**

20

**GREEN HORIZONS**

22-23



# Underground Potable & Non-Potable Water Storage

## Benefits

- + Containers made from robust, long-life polyethylene.
- + Food-safe design with test certificate in accordance with KTW recommendation.
- + Easy to transport, install and quick to fit due to low weight.
- + Easy to clean due to smooth tank interior surfaces.
- + To store drinking water.
- + 15 year warranty.



## Also available in non-potable



2,200L Diamant



Carat XL 10,000L



1,500L Platin

Description	Dimensions (mm)	Weight (kg)
2,200L Diamant Potable Set	L 2450 x W 1150 x H 1760	125
3,350L Diamant Potable Set	L 2450 x W 1400 x H 2010	150
4,800L Diamant Potable Set	L 2450 x W 1700 x H 2310	180
6,500L Diamant Potable Set	L 2450 x W 2000 x H 2610	260
Carat XL Potable 10,000L	L 3520 x W 2240 x H 2895	455
1,500L Platin Potable Set	L 2100 x W 1250 x H 1015	82
3,000L Platin Potable Set	L 2450 x W 2100 x H 1050	180
5,000L Platin Potable Set	L 2890 x W 2300 x H 1315	250

\*These tanks include telescopic dome shaft maxi with cover and 2" inlet/outlet connection

# Above Ground Water Storage

**Harlequin**  
**Storage Tanks**  
RELIABLE CONTAINERS



The Harlequin range of premium quality 'Aboveground Water Tanks' include the popular larger tanks for commercial applications and small slimline tanks for domestic applications.

The above ground water storage tanks range from 920 litres up to 9,250 litre models and are available as potable or non-potable. The tanks are suitable for agricultural, domestic, commercial and industrial purposes.

## Benefits

- + **Various installations** – can be used for agricultural, domestic, commercial or industrial premises.
- + **KIWA and WRAS approved** – all Harlequin potable water tanks have been confirmed to comply with UK Water Supply Regulations 1999, Water Byelaws 2004 Scotland and Water Supply Regulations (Northern Ireland).
- + **Non-corrosive** – manufactured from medium density polyethylene (MDPE), Harlequin tanks will never corrode.
- + **Protection against sunlight** – manufactured from UV stabilised polymer protecting the tank against potentially damaging effects of sunlight.
- + **Slimline and low-profile options** – for more awkward installations, slim and low to ground tank options are available.

## Standard with all water tanks:

- + Made from medium density polyethylene.
- + 2" outlet; 2" BSP(F) thread.
- + 2" screened vent.
- + Moulded in lifting eyes.



5,700L  
Vertical



1,200L  
Low Profile



1,100L  
Slimline

Description	Dimensions (mm)	Capacity (L)	Weight (kg)
920L Slimline Potable & Non-Potable	L 1530 x W 715 x H 1165	951	58
1,100L Slimline Potable & Non-Potable	L 1650 x W 690 x H 1420	1,097	60
1,200L Low Profile Potable & Non-Potable	L 1795 x W 1250 x H 1170	1,170	58
1,400L Vertical Potable & Non-Potable	Dia 1290 x H 1400	1,417	38
1,800L Vertical Potable & Non-Potable	Dia 1400 x H 1570	2,043	50
2,700L Vertical Potable & Non-Potable	Dia 1580 x H 1760	2,817	65
3,800L Vertical Potable & Non-Potable	Dia 1800 x H 1880	3,915	85
5,700L Vertical Potable & Non-Potable	Dia 2000 x H 2290	6,100	120
7,500L Vertical Potable & Non-Potable	Dia 2085 x H 2530	7,370	170
9,250L Vertical Potable & Non-Potable	Dia 2300 x H 2550	9,328	240

# Above Ground Storage Tanks

**ENDURAMAXX**  
FLUID MANAGEMENT INNOVATION



**The Enduramaxx range of tanks provides you with the ideal solution for storage of drinking water (potable), rainwater, chemicals, liquid fertilisers, molasses and liquid foodstuffs in almost any location.**

Enduramaxx tanks are manufactured to hold chemicals and liquids with a specific gravity of up to 2 SG. Available in 25 sizes, ranging from 150 litres to 30,000 litres, these tanks have been engineered and constructed in one piece, with no joins or seams eliminating the requirement for centre support poles. They are made from the highest-grade materials using the latest technologies in rotationally moulded UV stabilisation, ensuring excellent resistance. The high specification design of every product guarantees the exact solution to any requirement.

## Tank Features

- + Manufactured from UV stabilised polyethylene.
- + Rotationally moulded one-piece design.
- + Ribbed design provides added strength and rigidity.
- + Moulded lifting lugs on top of the tank allow easy lifting when empty or can be used as tie down points.
- + Large 620mm lid as standard.
- + 2" BSP male outlet.
- + 2 year warranty (conditions apply).

## Popular uses for these tanks include:

- + Rainwater harvesting (being non-chlorinated is better for crops and plants).
- + Civil engineering applications where mains water is not available.
- + Toilet flushing in industrial or commercial premises.
- + Irrigation and/or wash down facilities.
- + Equine and agricultural.
- + Horticultural and market garden applications.
- + Cost effective watering system.
- + Crop sprayer tank.



Description	Dimensions (mm)	Capacity (Gallons)	m <sup>3</sup>
10,000L Vertical Tank	Dia 1900 x H 3700	2,199	10
10,000L Vertical Tank	Dia 2400 x H 2500	2,199	10
12,500L Vertical Tank	Dia 2600 x H 2650	2,749	12.5
14,000L Vertical Tank	Dia 2600 x H 2900	3,079	14
15,000L Vertical Tank	Dia 2400 x H 3550	3,299	15
16,800L Vertical Tank	Dia 2600 x H 3410	3,695	16.8
20,000L Vertical Tank	Dia 2850 x H 3600	4,399	20
20,800L Vertical Tank	Dia 2600 x H 4150	4,575	20.8
22,000L Vertical Tank	Dia 3450 x H 2750	4,839	22
25,000L Vertical Tank	Dia 2700 x H 4650	5,499	25
26,000L Vertical Tank	Dia 3450 x H 3200	5,719	26
30,000L Vertical Tank	Dia 3450 x H 3650	6,599	30

**These tanks are available to store potable/non-potable water, rainwater, molasses and liquid fertiliser.**

**Other tanks such as water bowsers, ATV sprayers and trailer tanks are available on request.**



10,000L Molasses Tank



20,000L Non-Potable



20,000L WRAS Approved Potable



8,000L Fertiliser Bowsler

# Rainwater Harvesting Filter Kits

**Rainwater filters are important to make the water usable in any rainwater harvesting system and are used to filter debris from the rainwater as it flows from the roof before it enters the storage tank. The filters prevent leaves and moss entering the tanks, which helps prevent a build-up of sediment in the tanks.**

They have 2 inlets for incoming water which are 4" and 6" on the larger 800m<sup>2</sup> roof area filter. The 450m<sup>2</sup> and 800m<sup>2</sup> roof filters have an overflow taking the leaves and moss away to a drain or soakaway and an outlet in the bottom of the filter for water to enter the storage tank.

The water that runs down to the bottom of the tank and fills it through the calmed inlet from the bottom, which oxygenates the water and helps prevents it from stagnating. When the tank is full, the overflow siphon diverts the excess water to a drain or soakaway. The siphon design also draws dust and pollen which may be on the water surface first.

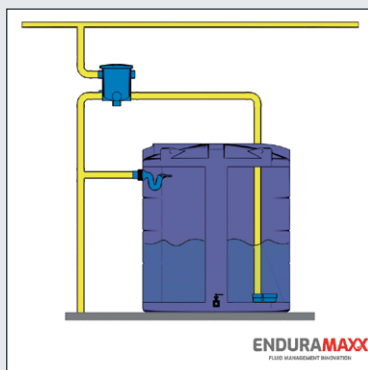
These filters are suitable for new and existing rainwater storage tanks.

Rainfall statistics for your location are available to view on the Met Office website.

## Filter Kit B

### Features

- + Designed for roof sizes up to a maximum of 450m<sup>2</sup>.
- + Two step cleaning system independent of flow rate ensuring high filtering efficiency.
- + Filter cartridge location assists continuous removal of dirt.
- + Frost resistant.
- + Self-cleaning and low maintenance.
- + Filter insert easily removable for cleaning.
- + Suitable for 110 mm (4") downpipes.
- + Filter unit weight 6.2 kg.
- + Siphon overflow with skimming inlet.
- + Siphon overflow pipe to fit a 130mm hole in storage tank wall.
- + Calmed inlet to prevent incoming water disturbing any sediment in tank.
- + Calmed inlet also ensures fresh water is supplied to lower area of the tank resulting in complete and regular replenishment of stored water.

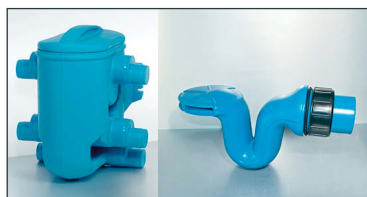
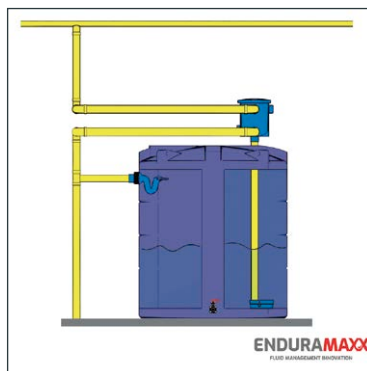




## Filter Kit C

### Features

- + Designed for roof sizes up to a maximum of 800m<sup>2</sup>.
- + For installation in a pilot shaft or against the wall in frost-protected areas.
- + Available pre-installed in pilot shaft.
- + Two step cleaning system independent of flow rate ensuring high filtering efficiency.
- + Filter cartridge location assists continuous removal of dirt.
- + Suitable for 110mm (4") and 160mm (6") down pipes.
- + Filter unit weight 16kg.
- + Siphon overflow with skimming inlet.
- + Siphon overflow pipe to fit a 130mm hole in storage tank wall.
- + Calmed inlet to prevent incoming water disturbing any sediment in tank.
- + Calmed inlet also ensures fresh water is supplied to lower area of the tank resulting in complete and regular replenishment of stored water.



# Wastewater Treatment



## Septic Tanks

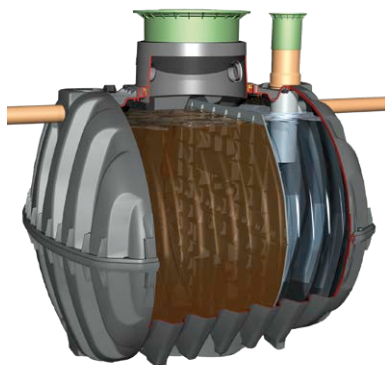
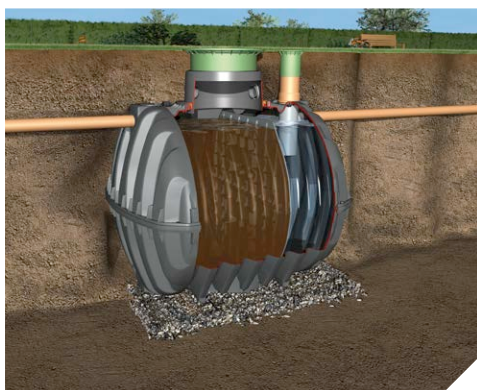
**Floating and removable material is extracted from domestic wastewater in mechanical septic tanks.** This is pure mechanical cleaning, for which you need 500L of capacity per inhabitant. If you assume a volume of 150L, the wastewater passes through the system in 3 days. These septic tanks must have a total volume of at least 2,000L. A 2,000L system is sufficient for 4 inhabitants, another 500L, must be incorporated for each additional inhabitant.

### Benefits

- + Low weight: can also be installed in difficult local conditions without a crane.
- + Reasonable purchase and installation costs.
- + Low maintenance: maintenance or cleaning work can be performed through the shafts.
- + Tanks can be used as rainwater harvesting systems after thorough cleaning.



Description	Dimensions (mm)	Inhabitants
Graf 2,700L Septic Tank	L 2080 x W 1656 x H 2010	Up to 4
Graf 3,750L Septic Tank	L 2280 x W 1755 x H 2200	Up to 11
Graf 4,800L Septic Tank	L 2280 x W 1985 x H 2430	Up to 18
Graf 6,500L Septic Tank	L 2390 x W 2190 x H 2710	Up to 30



# Sewage Treatment Plants

**Graf One2Clean dispenses with the unnecessary extras, making it a reliable solution:**

## Benefits

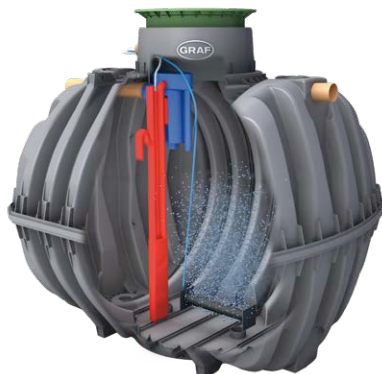
- + Only one tank with only one chamber required.
- + Less energy consumption and less wear.
- + No mechanical elements in the waste water.
- + No pumps in the waste water.
- + No electrical components in the waste water.
- + Incredibly little sewage sludge.
- + One2Clean is odourless.
- + Low space requirements.
- + 2 years warranty on technology.
- + 10 years warranty on sewage reservoirs.



**Scope of supply:** Carat Tank with mini tank dome, mini telescope dome and PE lid.

Description	Dimensions (mm)	Inhabitants	Volume (L)
5pe One2Clean	L 2280 x W 1755 x H 1880	Up to 5	3,750
7pe One2Clean	L 2280 x W 1985 x H 2110	Up to 7	4,800
9pe One2Clean	L 2390 x W 2190 x H 2390	Up to 9	6,500
10pe One2Clean	L 5160 x W 1755 x H 1880	Up to 10	2 x 3,750
14pe One2Clean	L 5160 x W 1985 x H 2110	Up to 14	2 x 4,800
18pe One2Clean	L 5380 x W 2190 x H 2390	Up to 18	2 x 6,500

Larger sizes available on request.



# Harlequin® HydroClear

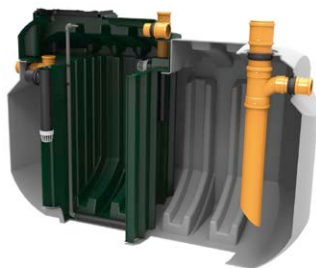
Easy to install and maintain with low operating costs, the range has 6 different sizes starting at a **domestic sized 6 population system**, available right up to a **commercial 50 population system**.

## Benefits

- + **Virtually inaudible** – high performance diaphragm blowers are used and externally housed achieving a virtually silent operation.
- + **Odourless** – the system is hermetically sealed, coupled with a market leading treatment performance that eliminates odour.
- + **MBBR technology** – Moving Bed Biological Reactor (MBBR) systems are self-cleaning and unable to become blocked through channelling, unlike most fixed film media systems.
- + **Market leading performance** – producing an excellent 96.6% pollutant removal level, the final effluent can be directly discharged into a stream or soakaway.
- + **Low maintenance costs** – chamber one capacity is as much as 66% larger than other plants, making desludging intervals up to three times longer saving the owner significant costs.
- + **Power failure default** – the system keeps performing as a septic tank in the event of a power failure.

Harlequin®  
HydroClear

SEWAGE TREATMENT PLANT



HydroClear HC9

Description	Dimensions (mm)	Inhabitants	Volume (L)
HydroClear HC6	L 2400 x W 1200 x H 2000	Up to 1-6	2,865
HydroClear HC9	L 2900 x W 1620 x H 2000	Up to 4-9	4,770
HydroClear HC12	L 4500 x W 1400 x H 2560	Up to 7-12	6,360
HydroClear HC20	L 5680 x W 1400 x H 2560	Up to 13-20	8,380
HydroClear HC30 (2-tank system)	Tank 1: L 4500 x W 1400 x H 2620 Tank 2: L 4500 x W 1400 x H 2620	Up to 21-30	13,190
HydroClear HC40 (2-tank system)	Tank 1: L 5680 x W 1400 x H 2620 Tank 2: L 4500 x W 1400 x H 2620	Up to 31-40	15,000
HydroClear HC50 (3-tank system)	Tank 1: L 5680 x W 1400 x H 2620 Tank 2: L 4500 x W 1400 x H 2620 Tank 3: L 3400 x W 1250 x H 2620	Up to 41-50	19,690



HydroClear HC20



HydroClear HC30 (2-Tank system)



HydroClear HC50 (3-Tank system)

# Pump Stations

Harlequin Pump Stations have been specifically designed and engineered for water/effluent applications including post wastewater treatment systems, sewage directly from the home and applications requiring a grinder pump. These UK-made systems are best suited for use in a domestic setup.

## Benefits

- + Suitable for domestic use.
- + 24 hours storage.
- + Durable and stable MDPE design.
- + Compact system.
- + Easy to install.
- + Low maintenance.
- + Market leading DAB pump.
- + Simple pipework.
- + Flat base for stability.



Description	Dimensions (mm)	Inhabitants	Volume (L)
450L Pump Station	L 600 x W 600 x H 1700	Extensions etc.	455
800L Pump Station	L 1000 x W 1000 x H 1225	1-5	820
1100L Pump Station	L 1000 x W 1000 x H 1645	1-7	1,140
1550L Pump Station	L 1200 x W 1200 x H 1625	1-10	1,600
3200L Pump Station	L 1200 x W 1200 x H 3205	Shared domestic/ small commercial applications	3,300

Each available in effluent, sewage and grinder pump versions.



800 Litre Pump Station

# Bunded Oil Tanks

The Harlequin range of oil tanks have been designed and manufactured to exceed the most technical, environmental and regulatory requirements. They are used primarily for the storage of heating oil for domestic and commercial purposes.

The Harlequin range of plastic bunded oil tanks are specifically designed to be environment friendly. The bunded design helps avert pollution incidents should there be a leak and the hassle of costly environmental clean-up operations. They are available from 650L up to 9,250L models.



Description	Dimensions (mm)	Capacity (L)	Weight (kg)
650 ITE/HQi Slimline	L 1715 x W 670 x H 1330	673	116
1000 ITE/HQi Slimline	L 2150 x W 690 x H 1420	1055	132
1100 ITE/HQi Slimline	L 1880 x W 890 x H 1595	1097	135
1200 ITE/HQi Low Profile	L 1900 x W 1600 x H 960	1317	130
1225 ITE/HQi Slimline	L 2110 x W 840 x H 1525	1248	150
1300 ITE/HQi Slimline	L 2100 x W 950 x H 1540	1344	170
1400 ITE/HQi Horizontal	L 1900 x W 1250 x H 1420	1452	135
1450 ITE/HQi Vertical	Diα 1560 x H 1590	1498	112
2000 ITE/HQi Horizontal	L 2360 x W 1315 x H 1415	2092	180
2500 ITE/HQi Horizontal	L 2460 x W 1435 x H 1470	2571	215
2525 ITE/HQi Slimline	L 2450 x W 1200 x H 1685	2550	235
3500 ITE Horizontal	L 2450 x W 1770 x H 1890	3471	275
5400 ITE Vertical	Diα 2575 x H 2100	5307	325
7500 ITE Vertical	L 2940 x W 2305 x H 2820	8088	505
9250 ITE Vertical	L 3140 x W 2510 x H 2820	9382	600



# Bunded Oil Tanks

## Option 1: HQi Bunded Oil Tank Only

### Specification

- + Integrally bunded.
- + Bottom outlet with 1" BSP(F) thread.
- + 16" lockable access lid.
- + 4" lockable inspection cap (fill point for 350 model).
- + 2" BSP(M) fill point (excludes 350 model).
- + 32mm hole with cover for electronic gauge.
- + Inner tank vent (excludes 350 model).



1000ITE



1200ITE

## Option 2: ITE Bunded Oil Tank with Gauge and Bottom Outlet Kit

### Specification

- + Integrally bunded.
- + Bottom outlet with 1" BSP(F) thread.
- + 16" lockable access lid.
- + 4" lockable inspection cap.
- + 2" BSP(M) fill point.
- + 32mm hole with cover for electronic gauge.
- + Inner tank vent.
- + Ultrasonic contents gauge with remote display.
- + Bottom outlet fitting kit.
- + LRC overfill prevention probe.



1450ITE



2500ITE



# Diesel Tanks

**The Harlequin range of Fuel Stations are the ultimate in diesel dispensing tanks and technology.**

Featuring forecourt style refuelling convenience and a range of added value technologies as standard, these high specification diesel tanks offer a quick and easy, safe and secure on-site fuel storage solution for smaller commercial, industrial and agricultural storage installation requirements.

Harlequin fuel stations are available in capacities ranging from 1,300L to 9,250L and feature integral bunding as standard.

Customers who do not require the added value technologies featured in the range fuel stations, may be interested in fuel points, which feature the same high quality mouldings and materials as fuel stations but have been designed with more basic fuel storage requirements in mind.



Description	Dimensions (mm)	Capacity (L)	Weight (kg)
1300 SLFS/SLFP Slimline	L 2300 x W 950 x H 1850	1344	175
1400 FS/FP	L 1610 x W 1570 x H 1880	1498	150
2500 SLFS/SLFP Slimline	L 2550 x W 1385 x H 1985	2530	210
2500 FS/FP	L 2060 x W 2020 x H 1880	2571	200
3500 FS/FP	L 2200 x W 2200 x H 1930	3553	250
5000 FS/FP	L 2720 x W 2220 x H 2360	5307	420
7500 FS	L 2940 x W 2305 x H 3020	8088	500
9250 FS	L 3140 x W 2510 x H 2820	9250	600

# Diesel Tanks

## Option 1: Fuel Station (FS)

### Standard with all Fuel Stations:

- + Fully banded.
- + 56/L 240V fuel pump.
- + Mechanical flow meter.
- + 10micron particulate and water filter.
- + 4m delivery hose; 3/4" delivery hose – 1300SLFS, 1400FS.
- + 6m delivery hose; 3/4" delivery hose – 2500FS and above.
- + Auto shut off nozzle.
- + Bulkhead light.
- + 2" BSP fill point.
- + 4" lockable inspection port.
- + LRC overflow prevention probe.
- + Electronic level gauge.
- + Fuel management system.

### Optional Extras:

- + 72L/min fuel pump.
- + Fuel management system upgrade on other fuel stations.

## Option 2: Fuel Point (FP)

### Standard with all Fuel Points:

- + Fully banded.
- + 56/L min 240V fuel pump.
- + 4m length; 3/4" delivery hose.
- + 6m length; 3/4" delivery hose – 5000FP.
- + Auto shut off nozzle.
- + 2" BSP fill point.
- + 4" lockable inspection port.

### Optional Extras:

- + Mechanical flow meter.
- + 10micron particulate fuel filter.
- + Electronic level gauge.



AdBlue also available - 5000BS



2500SLFS



5000FS



9250FS

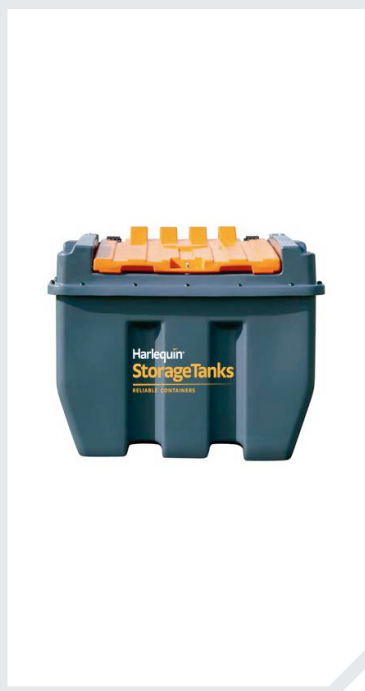
# Transfuel Bunded Fuel Tank

**This 430L Transfuel Bunded Tank, is the first plastic-on plastic portable fuel tank on the market which enables you to safely and legally transport and dispense fuel on-site**

Since it can be loaded onto any vehicle it saves valuable time and money in not having to bring the vehicle to the pumps. A factory fitted Piusi By-Pass 3000 pump, 4m hose and a dispensing nozzle allows the fuel to be dispensed with virtually no effort. Specialist driver qualifications and vehicle modifications are not required to use a Transfuel Bunded Tank. It fully complies with the Control of Pollution (Oil Storage) Regulations (2001) (England and Wales) (N. Ireland 2010) and Water Environment (Oil Storage) (Scotland) Regulations 2006.

### Features

- + Heavy duty lockable door.
- + Lifting points included.
- + Easy to maintain with quick release system.
- + Plug and go installation.
- + Long lasting MDPE material only.



Description	Dimensions (mm)	Capacity (L)	Weight (kg)
430L Transfuel Bunded	L 1010 x W 1260 x H 1090	426	110



# How to order...

Although this brochure contains a vast list of products we offer, it is by no means exhaustive. If there is something specific you require that you cannot find here, please ask and we will do our best to help.

**You can order tank products through your usual Agrii contact or by calling our Drainage Supplies Team using the contact details below:**

## **Jackie Thompson**



07866 139 443



jackie.thompson@agrii.co.uk

## **Kevin McAllister**



07766 366 699



kevin.mcallister@agrii.co.uk

## **Liz McCubbin**



07593 382 116



liz.mccubbin@agrii.co.uk

## **Or contact us on...**



0845 607 3322



pipes@agrii.co.uk



[www.agrii.co.uk/products-services/pipes-and-drainage](http://www.agrii.co.uk/products-services/pipes-and-drainage)



# GREEN HORIZONS

**Green Horizons is Agrii's commitment to sustainable food production, and to taking a lead on principles and practices that can help to create a robust future for UK agriculture.**

At its centre is our Five Point Plan to help prepare for, and meet, the challenges of tomorrow, while ensuring that agriculture remains sustainable and profitable.

The **Five Point Plan** covers the action we are taking in each of the following areas:



**Increasing farm productivity and viability**



**Providing integrated whole farm solutions**



**Improving soil resilience**



**Enhancing the environment**



**Extending stakeholder engagement**

An Insight Report that pulls together all the projects, research and ongoing work with farmers that Agrii is involved in, within each area, will be produced for each of the five points of the plan. You can view the Insight Reports and latest Green Horizons updates at [www.agrii.co.uk/greenhorizons](http://www.agrii.co.uk/greenhorizons).

## PROTECTION OF WATER RESOURCES

**Water is a key 'public good' listed under the Government's 25 Year Environment Plan. Responsible use of crop protection products, and reduced reliance on them, both have a key role to play in maintaining and improving water resource quality on and near our farms.**

Climate change brings with it the likelihood of increased instances of extreme weather, including more occurrences of both drought and flooding events.

**Improving the farm's general environmental resilience can help to reduce the impact that these more frequent severe weather events might have.**

**The introduction of rainwater harvesting systems is one way that the farm's vital water resources can be preserved.** They have the obvious draw of mains water savings for those with indoor cattle, pigs or poultry, but faster sprayer filling, fewer spray pump and line problems in hard water areas and no need for water conditioners, are now also providing additional arable attractions in the drive towards greater sustainability.

## CASE STUDY

## RAINWATER HARVESTING PAYS DIVIDENDS FOR ANGUS FARMER

At North Mains of Dun, harvesting rainwater with an Agrii system is saving David and Jenny Warden around a third of the annual mains water bill for their mixed arable, pig and soft fruit business.

Installed 10 years ago, the 10,000 litre above-ground tank system has already repaid the family's investment many times over and still has plenty of life left in it.



"Mains water is expensive," says David Warden. "Especially when you're fattening 3000 pigs a year, each drinking 6-7 litres a day and growing strawberries, blackberries, raspberries and blueberries."

"We have a 4 million gallon irrigation pond filled by natural offline water abstraction from our local watercourse for the fruit we grow as part of Angus Growers."

"Alongside this, capturing rainwater from our 800m<sup>2</sup> livestock shed roof is invaluable. With our pigs alone consuming over 1.5 million litres of water each year, we reckon it's saving us buying around a third of what we need."

"Harvesting water from the roof helps restrict the pressure intense rainfall puts on our farm drainage system," he adds. "So, it's good for the environment as well as our business. Being as sustainable as possible in every way is essential for a small farm like ours. It's all about making the very most of every resource we have and wasting as little of anything as we can – most importantly the water we get free of charge."

## TOP TIPS

### IF YOU'RE CONSIDERING RAINWATER HARVESTING

- + Check on the availability of grants under Countryside Stewardship and the newly emerging ELMS;
- + Match tank capacity carefully to roof area and local rainfall;
- + Site tanks conveniently for both the buildings serving them and sprayer access;
- + Place above-ground tanks on a solid concrete;
- + Install good quality filters to intercept debris and help oxygenate the water;
- + Employ calmed inlets to prevent incoming water disturbing any sediment;
- + Leave enough space between the guttering and top of the tank for the filter; and,
- + Check what, if any, legislative requirements may be involved.

**Agrii can help with all of the above – please get in touch.**

**For more case studies and information on protection of water resources, please visit [www.agrii.co.uk/greenhorizons](http://www.agrii.co.uk/greenhorizons).**



**For further information or to order, please speak to your usual Agrii contact or get in touch with our Drainage Supplies Team:**



01738 646721



[pipes@agrii.co.uk](mailto:pipes@agrii.co.uk)



[www.agrii.co.uk/products-services/pipes-and-drainage](http://www.agrii.co.uk/products-services/pipes-and-drainage)



Printed using vegetable inks on paper made from FSC® certified and traceable pulp sources. Manufactured in accordance with ISO certified standards for environmental, quality and energy management. A Carbon Balanced product with World Land Trust certificates.

**Agrii**<sup>TM</sup>

[www.agrii.co.uk](http://www.agrii.co.uk)